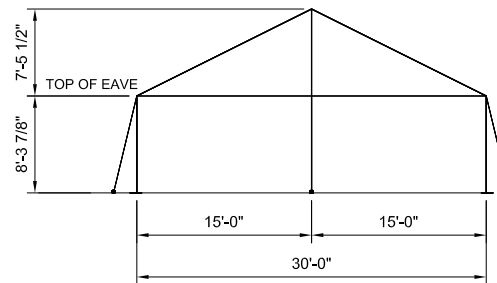
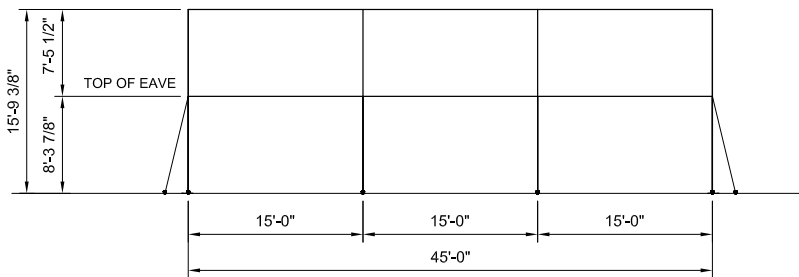


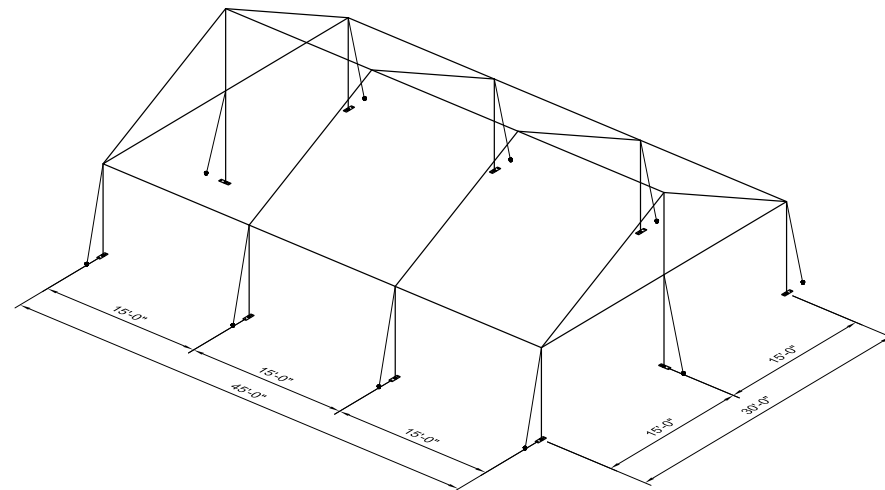
PLAN VIEW



END VIEW



SIDE VIEW



3D VIEW

NOTES:

- SEE THE I.F.A.I. STAKING GUIDE ON OUR WEBSITE (WWW.ANCHORINC.COM) FOR SOIL IDENTIFICATION & PULL-OUT CAPACITY OF STAKES.

F3 FRAME TENT
 30' x 45' TENT - 1350 SQ. FT.
 • (10) 1" WEB GUYS WITH RATCHETS
 • (20) 1" x 30" STAKES

* SEE NOTES



Caution:

Staking or anchoring is the responsibility of the installer. Soil conditions will dictate the number of stakes or anchors required. **Do not use this drawing to determine staking requirements.** Contact Anchor for Engineering loading data that can be used in conjunction with IFAI methodologies to determine site specific anchoring requirements.

ITEM DESCRIPTION		ITEM NO.
ANCHOR INDUSTRIES INC.		
F3 BROCHURE DRAWING		
30' x 45' GABLE END FRAME W/(3) 15' MIDS		
DRAWN BY:	DMK	CHECKED BY:
APPROVED BY:	EC#	DATE:
REVISION HISTORY		DRAWING NO.
1	2/29/2016	DMK
REV	DATE	BY
EC	DATE	BY
		08-17-2015
		15-284-8-2

All data and information contained in or derived from this document is confidential and proprietary information of Anchor Industries, Inc. and all rights therein are expressly reserved. By accepting this material the recipient agrees that the material and the information contained therein is to be used in compliance with the terms and conditions of the license agreement. This document is not to be reproduced in any manner to others except to meet the specific purpose for which it was delivered.