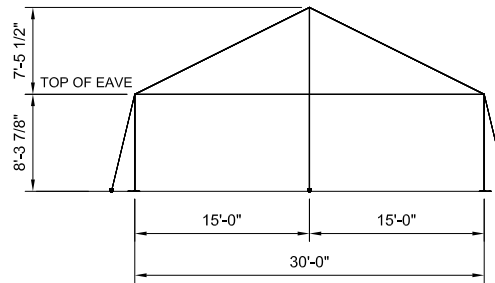
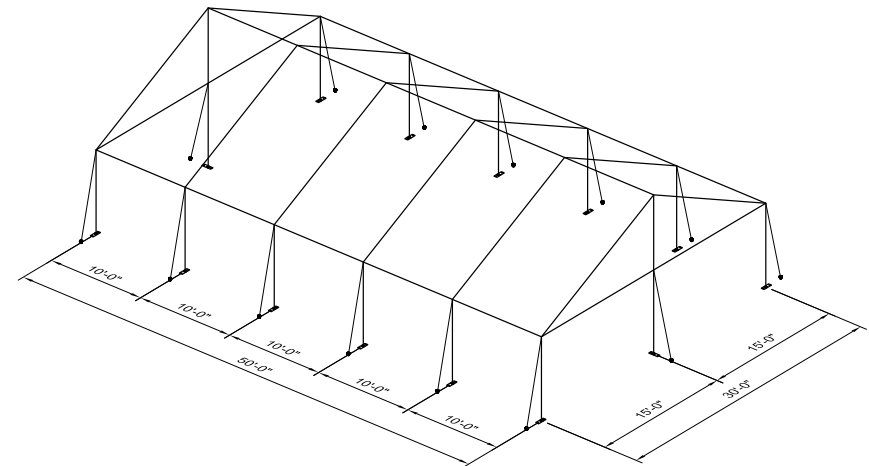


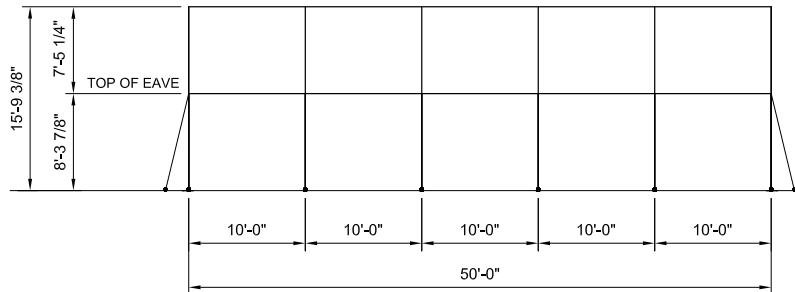
PLAN VIEW



END VIEW



3D VIEW



SIDE VIEW

NOTES:

- SEE THE I.F.A.I. STAKING GUIDE ON OUR WEBSITE (WWW.ANCHORINC.COM) FOR SOIL IDENTIFICATION & PULL-OUT CAPACITY OF STAKES.


F3 FRAME TENT
 30' x 50' TENT - 1500 SQ. FT.
 • (14) 1" WEB GUYS WITH RATCHETS
 • (28) 1" x 30" STAKES

* SEE NOTES



Caution:

Staking or anchoring is the responsibility of the installer. Soil conditions will dictate the number of stakes or anchors required. **Do not use this drawing to determine staking requirements.** Contact Anchor for Engineering loading data that can be used in conjunction with IFAI methodologies to determine site specific anchoring requirements.

ITEM DESCRIPTION		ITEM NO.
		
F3 BROCHURE DRAWING		
30' x 50' GABLE END FRAME W/(5) 10' MIDS		
DRAWN BY: DMK	CHECKED BY:	DRAWING NO.
APPROVED BY:	EC#	DATE: 08-17-2015
15-284-4-3		

REV	EC	DATE	DMK	BY
1		2/29/2016	DMK	

REVISION HISTORY